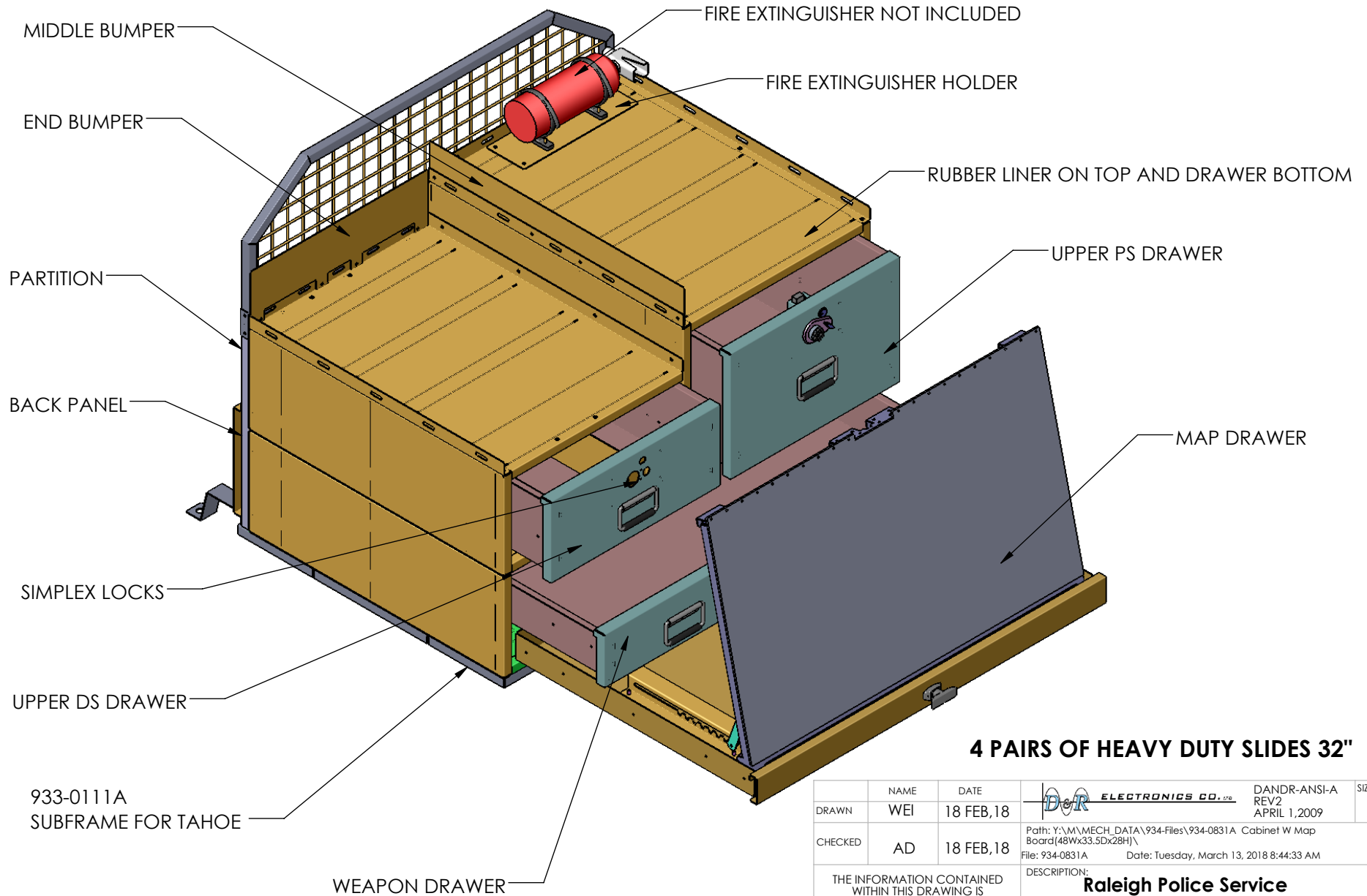
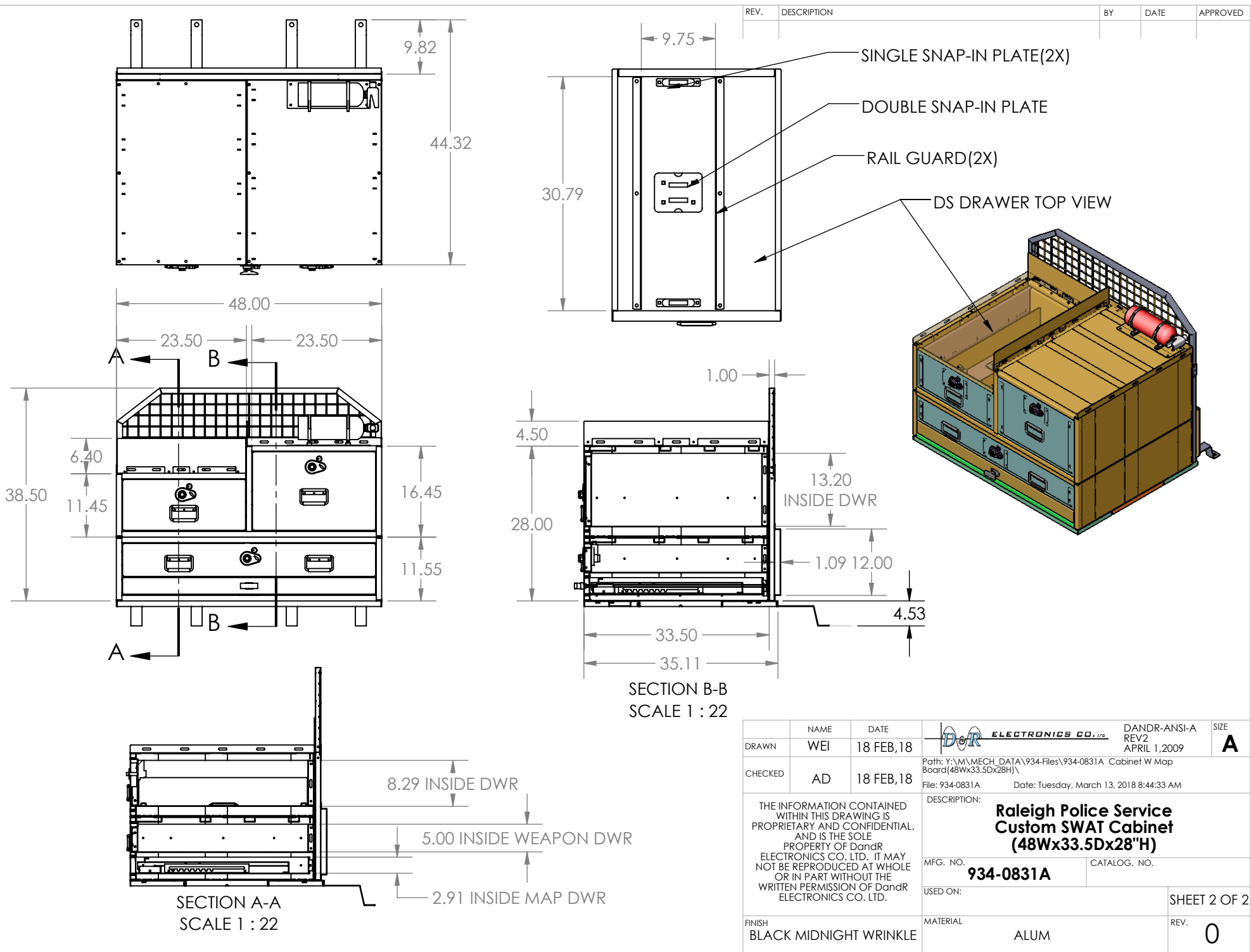


REV.	DESCRIPTION	BY	DATE	APPROVED



**4 PAIRS OF HEAVY DUTY SLIDES 32"**

	NAME	DATE	<b>ELECTRONICS CO., LTD.</b> DANDR-ANSI-A REV2 APRIL 1, 2009	SIZE
DRAWN	WEI	18 FEB, 18		<b>A</b>
CHECKED	AD	18 FEB, 18	Path: Y:\M\MECH_DATA\934-Files\934-0831A Cabinet W Map Board(48Wx33.5Dx28H)\ File: 934-0831A Date: Tuesday, March 13, 2018 8:44:33 AM	
THE INFORMATION CONTAINED WITHIN THIS DRAWING IS PROPRIETARY AND CONFIDENTIAL. AND IS THE SOLE PROPERTY OF DandR ELECTRONICS CO. LTD. IT MAY NOT BE REPRODUCED AT WHOLE OR IN PART WITHOUT THE WRITTEN PERMISSION OF DandR ELECTRONICS CO. LTD.			DESCRIPTION: <b>Raleigh Police Service          Custom SWAT Cabinet          (48Wx33.5Dx28"H)</b>	
FINISH			MFG. NO.	CATALOG. NO.
BLACK MIDNIGHT WRINKLE			<b>934-0831A</b>	
			USED ON:	SHEET 1 OF 2
			MATERIAL	REV.
			ALUM	<b>0</b>



REV.	DESCRIPTION	BY	DATE	APPROVED

DRAWN <b>WEI</b>	NAME <b>WEI</b>	DATE <b>18 FEB, 18</b>	<b>ELECTRONICS CO., LTD.</b>	DANDR-ANSI-A REV2 APRIL 1, 2009	SIZE <b>A</b>
CHECKED <b>AD</b>	NAME <b>AD</b>	DATE <b>18 FEB, 18</b>	Path: Y:\M\MECH_DATA\934-Files\934-0831A Cabinet W Map Board(48Wx33.5Dx28H)\ File: 934-0831A Date: Tuesday, March 13, 2018 8:44:33 AM	DESCRIPTION: <b>Raleigh Police Service          Custom SWAT Cabinet          (48Wx33.5Dx28"H)</b>	
THE INFORMATION CONTAINED WITHIN THIS DRAWING IS PROPRIETARY AND CONFIDENTIAL. AND IS THE SOLE PROPERTY OF DandR ELECTRONICS CO. LTD. IT MAY NOT BE REPRODUCED AT WHOLE OR IN PART WITHOUT THE WRITTEN PERMISSION OF DandR ELECTRONICS CO. LTD.			MFG. NO. <b>934-0831A</b>	CATALOG. NO.	SHEET 2 OF 2
FINISH <b>BLACK MIDNIGHT WRINKLE</b>	MATERIAL <b>ALUM</b>	USED ON:	REV.	<b>0</b>	